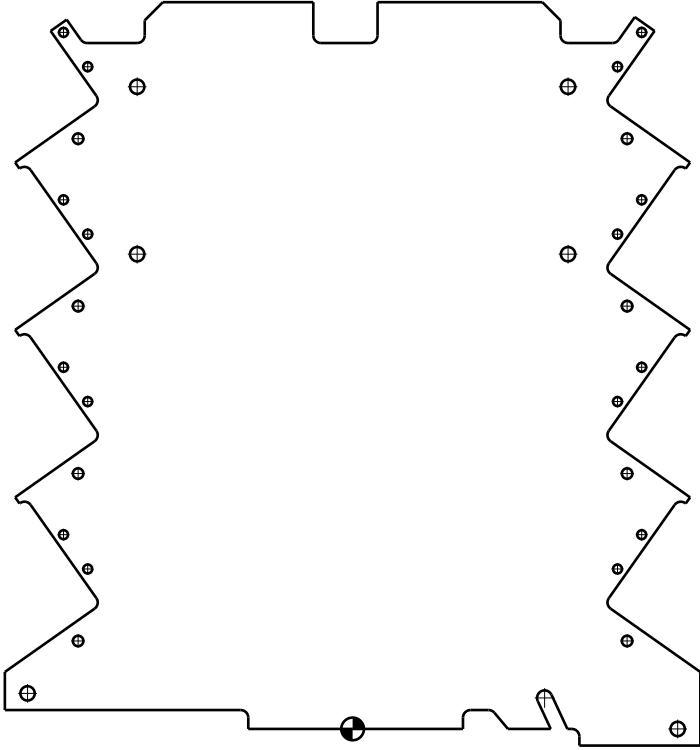
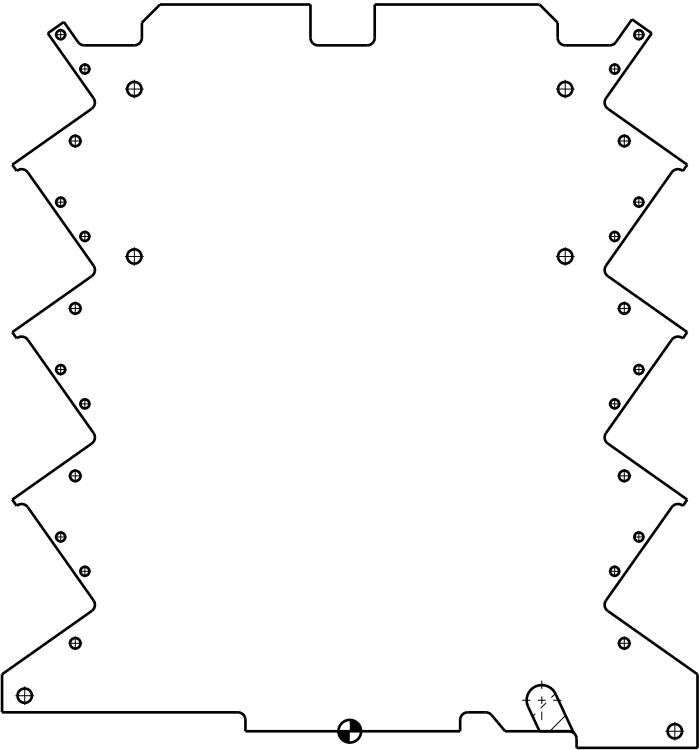


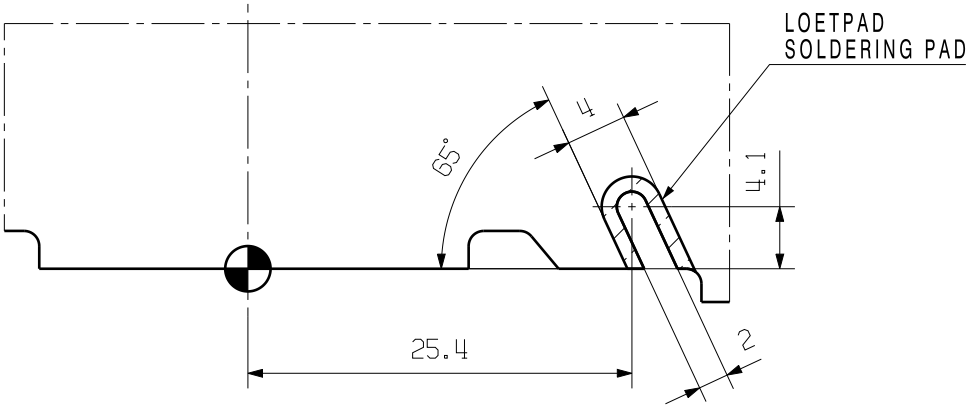
WEITERGABE SOWIE Vervielfaeltigung dieses Dokuments, Verwertung und Mitteilung seines Inhalts sind verboten, soweit nicht ausdruecklich gestattet.
Zuwaenderungen verpflichtet zu Schadenersatz. Alle Rechte fuer den Fall der Patent-, Gebrauchsmuster- oder Geschmacksmustereintragung vorbehalten.
THE REPRODUCTION, DISTRIBUTION AND UTILIZATION OF THIS DOCUMENT AS WELL AS THE COMMUNICATION OF ITS CONTENTS TO OTHERS WITHOUT EXPLICIT AUTHORIZATION IS PROHIBITED.
OFFENDERS WILL BE HELD LIABLE FOR THE PAYMENT OF DAMAGES. WEIDMUELLER EXCLUSIVELY RESERVES THE RIGHT TO FILE FOR PATENTS, UTILITY MODELS OR DESIGNS.

© WEIDMUELLER INTERFACE GmbH & Co.KG

DIE DEUTSCHE VERSION IST VERBINDLICH
THE GERMAN VERSION IS BINDING




DETAILANSICHT FUER FE-LAYOUT
DETAIL VIEW FOR FE-LAYOUT



SPERRFLAECHE FUER FE
NON-USABLE AREA FOR FE



SPERRFLAECHE OPTIONAL FUER FE
NON-USABLE AREA OPTIONAL FOR FE

MATERIAL: .			PART NO.: .	MAT.NO.: .	CAT.NO.: .
			FINISH TO WN 2 11 001 - FINISH: ELECTROPLATED . SURFACE AREA: . mm ²		
			GENERAL TOLERANCES: .	TOLERANCES TO ISO 8015 <input type="checkbox"/> . <input type="checkbox"/> WN 2 12 010 <input checked="" type="checkbox"/> ISO 2768-f	
	56082/5 11.03.10 ENNS_E 00		Weidmüller 		
	MODIFICATION		DRAWING NO. 3 50664 ISSUE NO. 04		
	DATE	NAME	LP CH20M6 SPERRFLAECHE FUER FE NON-USABLE AREA FOR FE		
DRAWN	17.07.2009	SEIDEL_T			
RESPONSIBLE		NIGGEMANN_M			
CHECKED	16.02.2011	HECKERT_M			
R.PART NO.: .			SHEET 05 OF 05 SHEETS		
SCALE: 1/1	CHECKED		PRODUCT FILE: CH20...		
SUPERSEDES: .	APPROVED		5670		